



*Jordan Fishwick*

**DIDSBURY**  
Parrs Wood Road



## Parrs Wood Road, Didsbury, M20 5QQ

£595,000

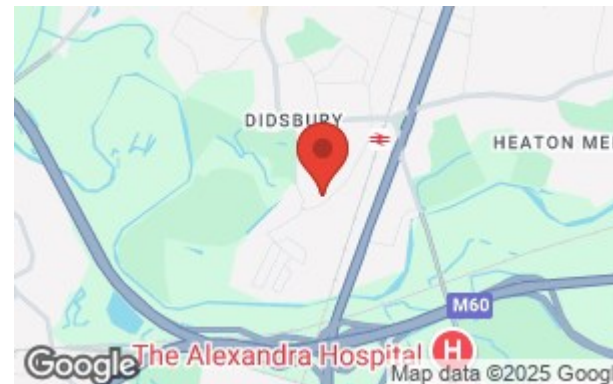


### The Property

A traditional BAY FRONTED semi detached family property offering SPACIOUS living space with accommodation over THREE FLOORS and a DELIGHTFUL PRIVATE LARGE REAR GARDEN, driveway and convenient location close to the train station, Metrolink & Didsbury Village. The property comprises: Entrance porch, entrance hall with solid hardwood flooring, dining room with bay window, separate lounge with patio doors leading to rear garden and light and spacious kitchen. To the first floor: landing with staircase to second floor, master bedroom with bay window and built in wardrobes, two further good size bedrooms, bathroom with white suite and separate wc. To the second floor additional fourth bedroom with dormer window offering panoramic views over the rear garden. Driveway to the front and side offering ample off road parking, detached brick built garage and a large lawned garden to the rear. Double glazing and gas central heating complete the impressive specification.

### Directions

M20 5QQ



- Four bedroom semi detached
- Accommodation over 3 floors
- Large lawned garden to rear
- Ample off road parking & detached garage
- Spacious living space & entrance hall
- Excellent location close to amenities & parks
- Loft conversion with dormer windows

Postcode - M20 5QQ

EPC Rating - D

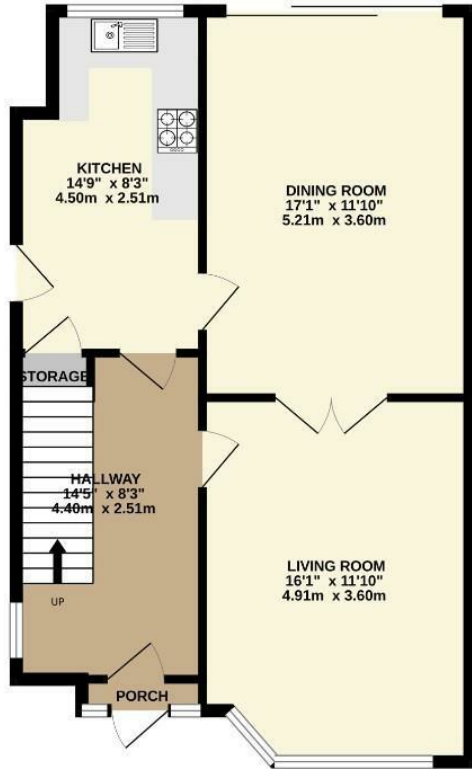
Floor Area - 1407.00 sq ft

Local Authority - Manchester City Council

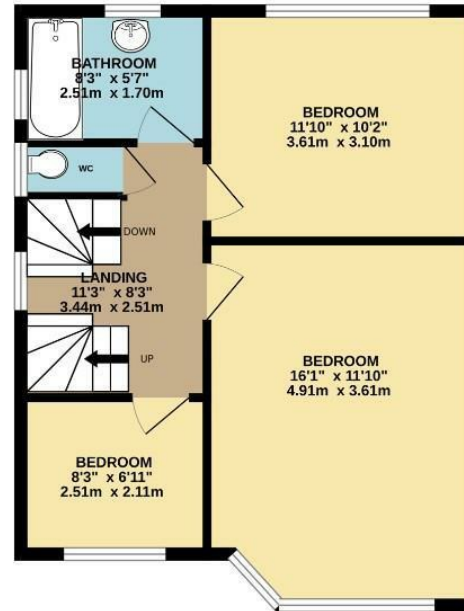
Council Tax - D



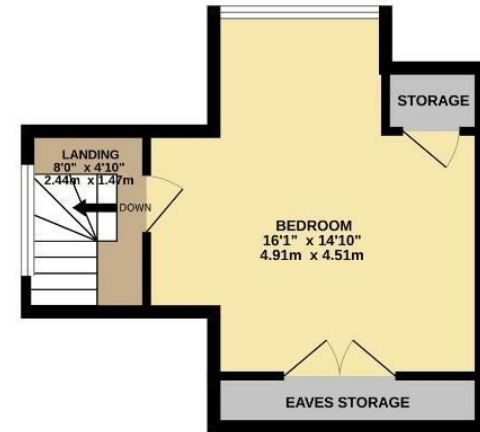
GROUND FLOOR  
631 sq.ft. (58.7 sq.m.) approx.



1ST FLOOR  
503 sq.ft. (46.8 sq.m.) approx.



2ND FLOOR  
272 sq.ft. (25.3 sq.m.) approx.



TOTAL FLOOR AREA : 1407 sq.ft. (130.7 sq.m.) approx.  
Measurements are approximate. Not to scale. Illustrative purposes only  
Made with Metropix ©2025



These particulars are believed to be accurate but they are not guaranteed and do not form a contract. Neither Jordan Fishwick nor the vendor or lessor accept any responsibility in respect of these particulars, which are not intended to be statements or representations of fact and any intending purchaser or lessee must satisfy himself by inspection or otherwise as to the correctness of each of the statements contained in these particulars. Any floorplans on this brochure are for illustrative purposes only and are not necessarily to scale.

Offices also at: Wilmslow, Macclesfield, Hale, Sale, Chorlton, Glossop, Manchester & Salford

757-759 Wilmslow Road, Didsbury Village, Manchester

0161 445 4480

didsbury@jordanfishwick.co.uk  
www.jordanfishwick.co.uk